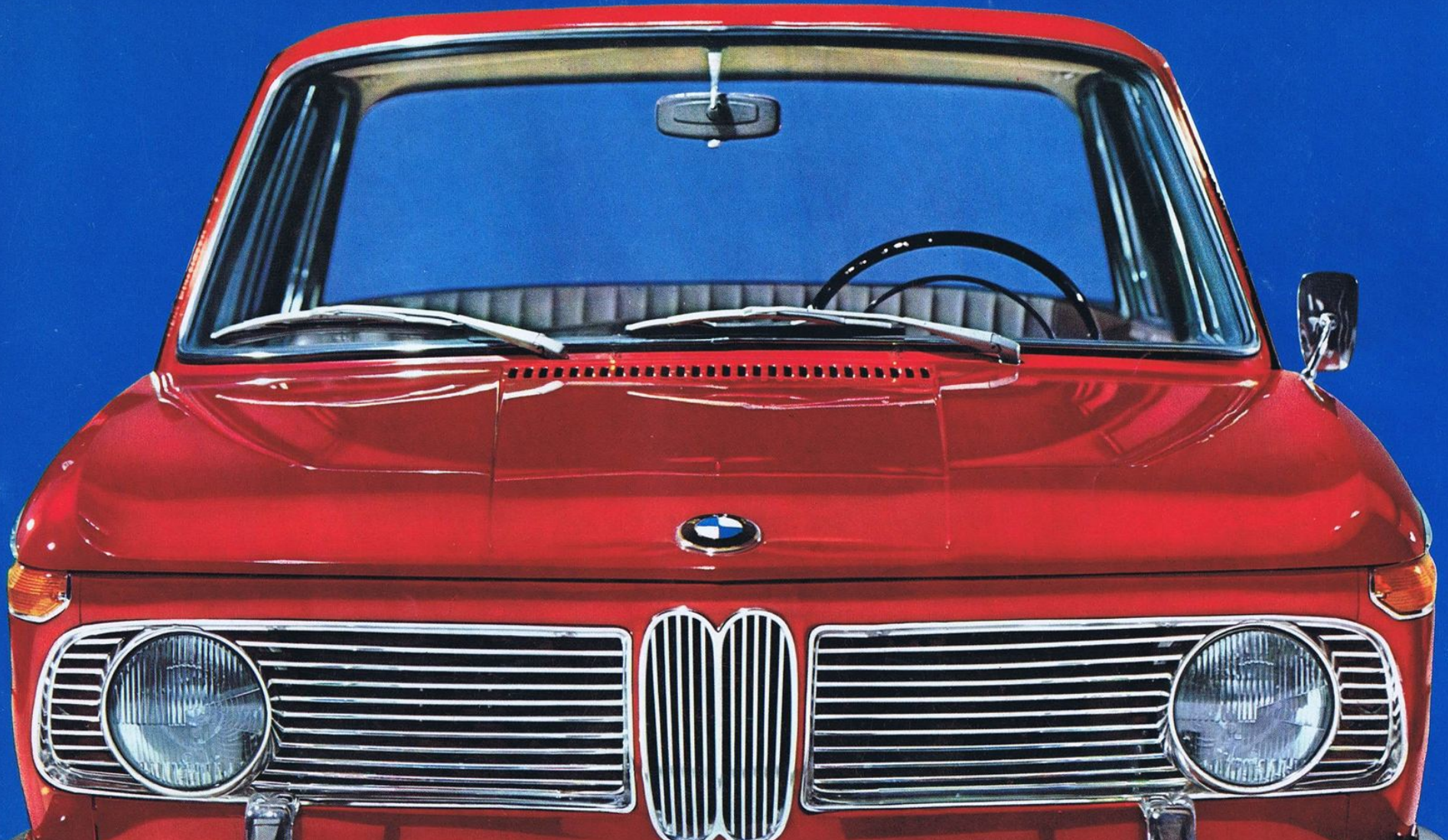




**BMW 1800**











**There is no other car like it**

BMW 1800 - a car conceived according to new standards. It represents a new class of car. Breaking away from all conventional ideas, and without compromise, engineers have developed a car which perfectly matches their idea of optimum driving performance and maximum safety. The car is full of new technical ideas.

Three examples:

Body: an all-steel body of light-weight construction with integral arranged struts provides increased safety.

Engine:

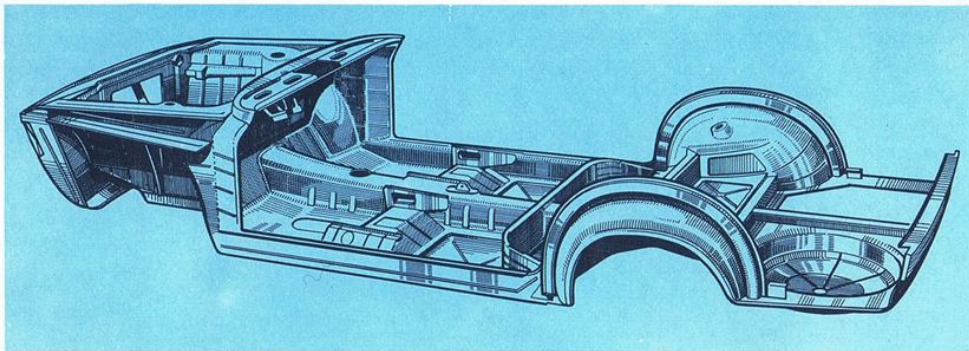
inclined by 30°, with a 3-bearing overhead camshaft and inclined valves provides higher output and increased durability.

Suspension:

The combination, for the first time, of spring leg front axle with rear wheels suspended from longitudinal arms provides unrivalled road-holding performance.

The car combines sports car performance with the luxurious comfort of expensive limousines. It is a car without parallel. It represents a new class of vehicles.





All-steel body in light-weight construction. Built for safety. Distortion-resistant in all directions. Dimensionally stable because of

integral arranged struts. Body welded to floor unit. A safe unit.

### Handsome and functional

The appearance of this car will remain fashionable for many years. One glance at the interior of the car will convince you of the harmonious matching of outside and inside elegance. This car which was designed with only safety in view, is a symphony of engineering vision, elegant appearance, and sophisticated style.







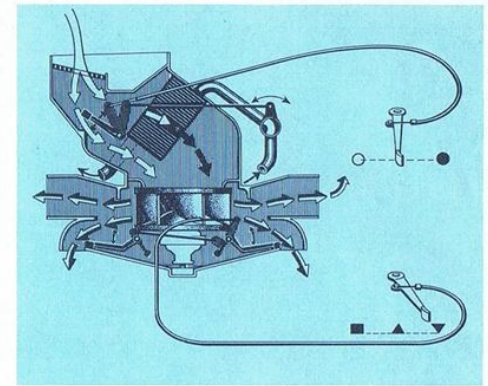








Fresh-air heating – a perfect source of heat. High heating effect achieved quickly. Two-speed fan for increasing heating and ventilation effect at low speeds or when warming up. Heating temperature to be controlled without delay and in a fine dosed manner, by means of adding cool fresh-air to the warm air. Natural atmospheric humidity is maintained – healthy air-conditioning even on long journeys, in wintertime.



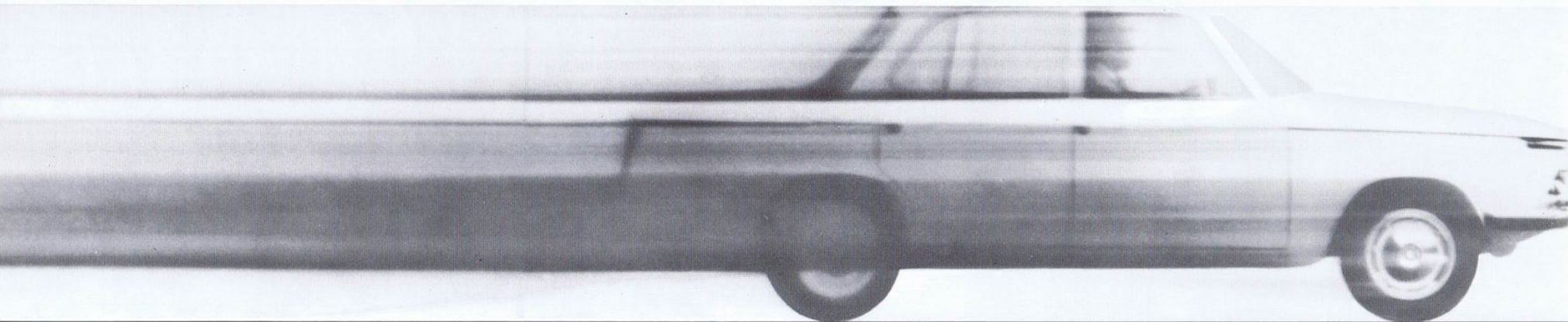
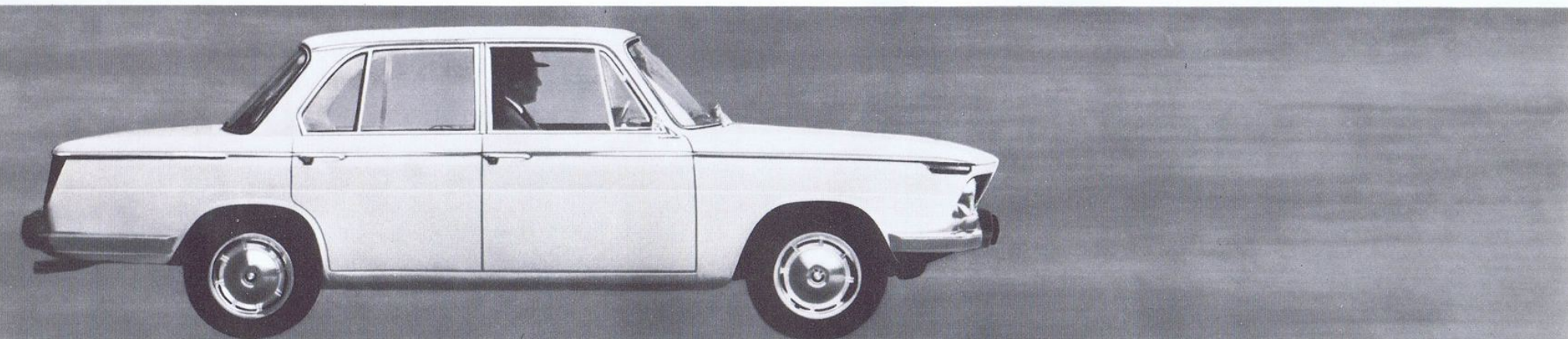
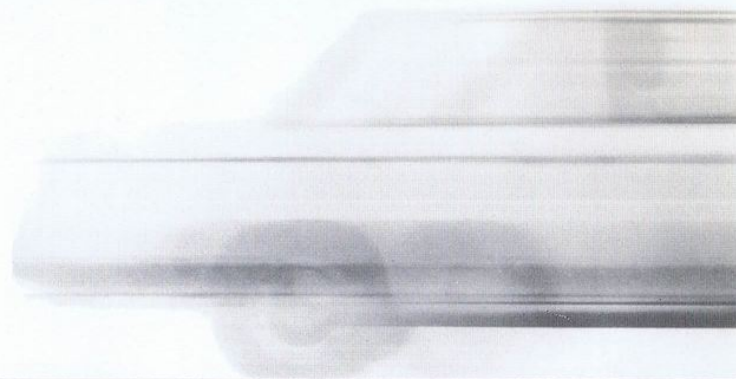
From left to right:

Anti-glare, padded instrument panel · control for parking and dipping lamp, combined with infinitely variable instrument illumination · speedometer with daily mileage indicator · electric clock · instrument panel with control lamps for battery charge, oil pressure, main beam, choke, direction indicators, scale for fuel and operating temperature · electric 2-speed windshield wiper · operating lever for fresh air and heater · ash trays · cigar lighter · glove box · grab handle for front seat passenger · firm-grip safety steering wheel with recessed hub and continuous annular twin-tone horn rim · operating lever for main beam, asymmetrical dipping beam and overtaking light · operating lever for direction indicators and windshield washer · ignition lock with garaging position and repeated starting lock · operating lever for two-speed fresh air fan.

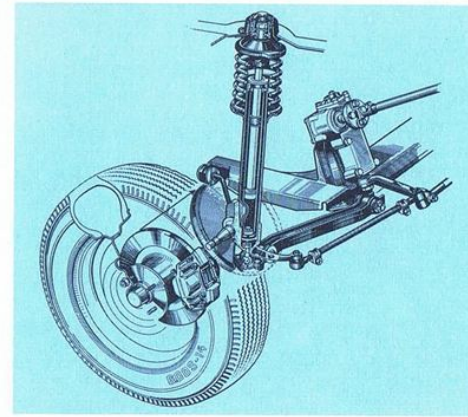
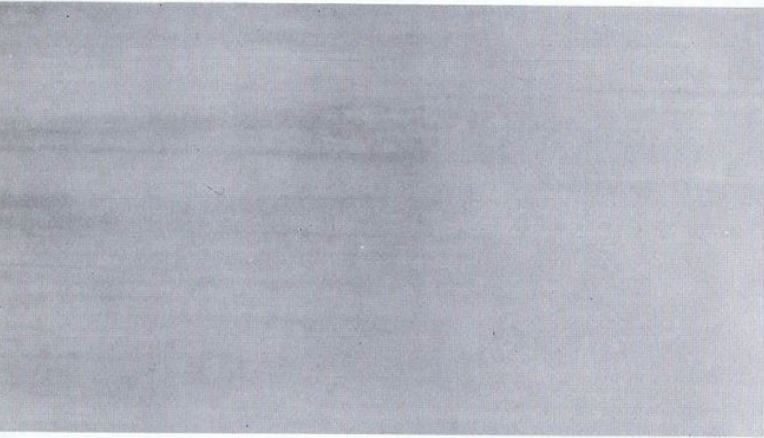
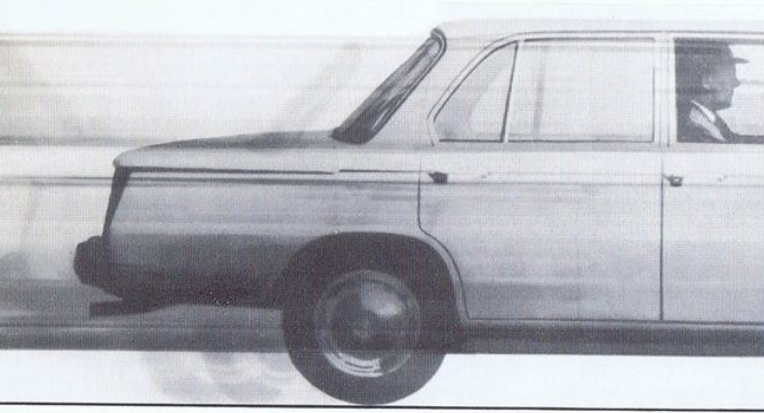
Wherever you look in this new BMW you see engineering used in the service of your safety. One example: the BMW windshield washer: finger tip operation means you need not take your hand away from the steering wheel to give you clear vision when overtaking on a wet and dirty road. The windshield is automatically rinsed, washed, and wiped clean.



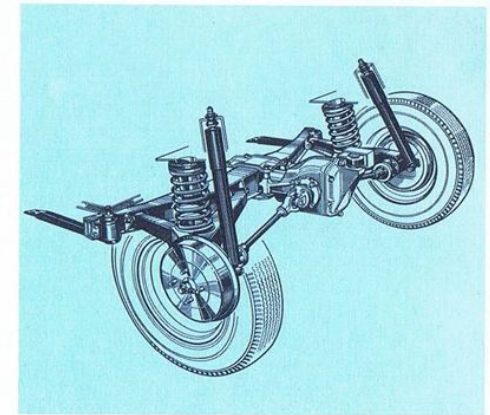
**90 h.p.! from 0 to 50 miles (80 km) per hour in 8,9 sec.!**







Long-stroke-springleg axle – long springleg base. Excellent ground contact – gentle response to all road unevenness.



Flexibly suspended rear axle unit. Ideal suspension and springs. Coil springs with auxiliary rubber-air spring  $7\frac{1}{2}$ " (190 mm) spring deflection. Double-action telescopic shock-absorbers with long working stroke. Longitudinal arms suspended from delta carriers in rubber. Individually suspended wheels.

This car is reliable in every way. The powerful, responsive engine and the well-balanced gear ratios provide brilliant acceleration. The effectively matched, Mastervac-assisted brake system gives positive stopping with minimum pedal pressure.

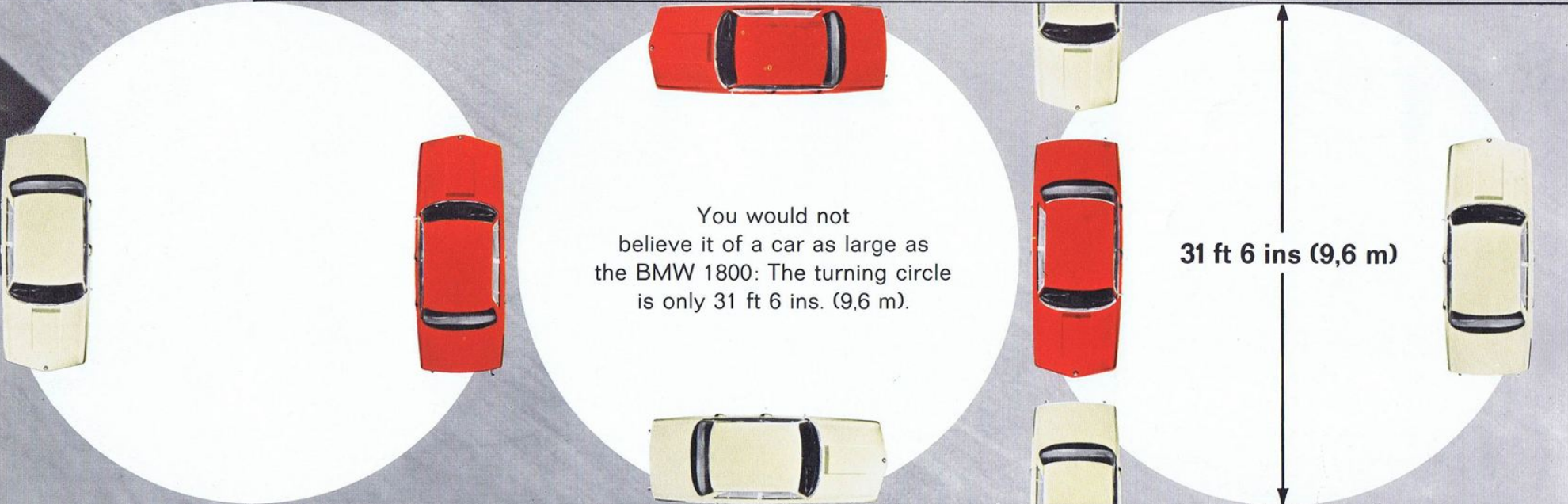




Stylish performance is assured with the new BMW, on good, bad, or wet roads, and when cornering. The clever, balanced design - combining for the first time.

Independent suspension: front: shock-absorber legs; rear: trailing arms. - Accurate and easy steering provide unique road-holding performance under all conditions



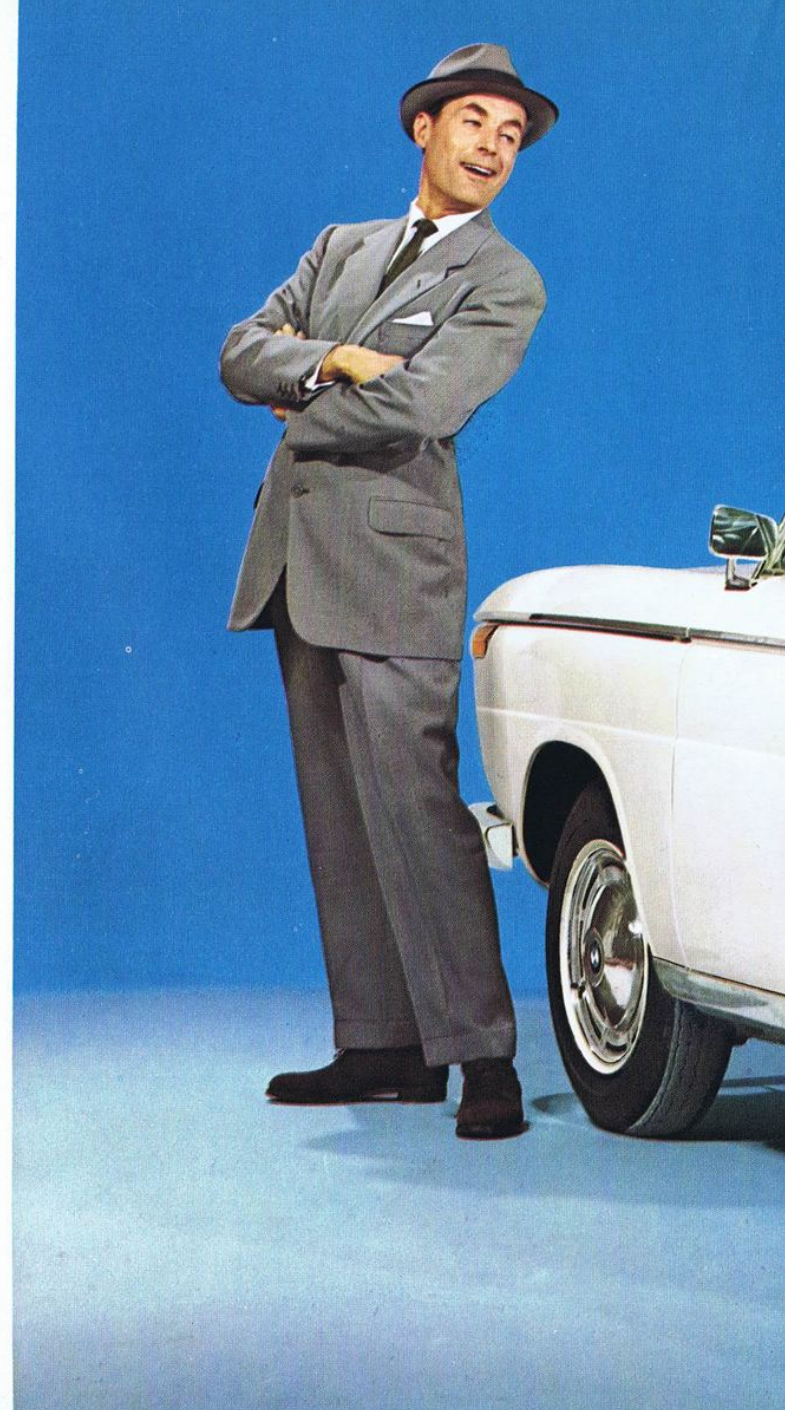


You would not  
believe it of a car as large as  
the BMW 1800: The turning circle  
is only 31 ft 6 ins. (9,6 m).

**31 ft 6 ins (9,6 m)**



Handsome, elegant, civilised. It has everything. Large windows provide all-round vision. Everything has been thought of: the striking tail lamps, the brilliant reversing lamps, the solid bumpers with rubber shock-absorbers on the over-rider. Everything is on a generous scale. Even the luggage boot: large, with clean lines, neat and without wasted spaces. The lid is spring-assisted.











Wide seats with deep thigh support in tastefully matched fabric moulded to fit the contours of the body. They support the back, firmly hold the body, and guarantee driving without fatigue, even on long journeys. The backs of the seats can be adjusted in many different positions so that the most comfortable position can be selected.

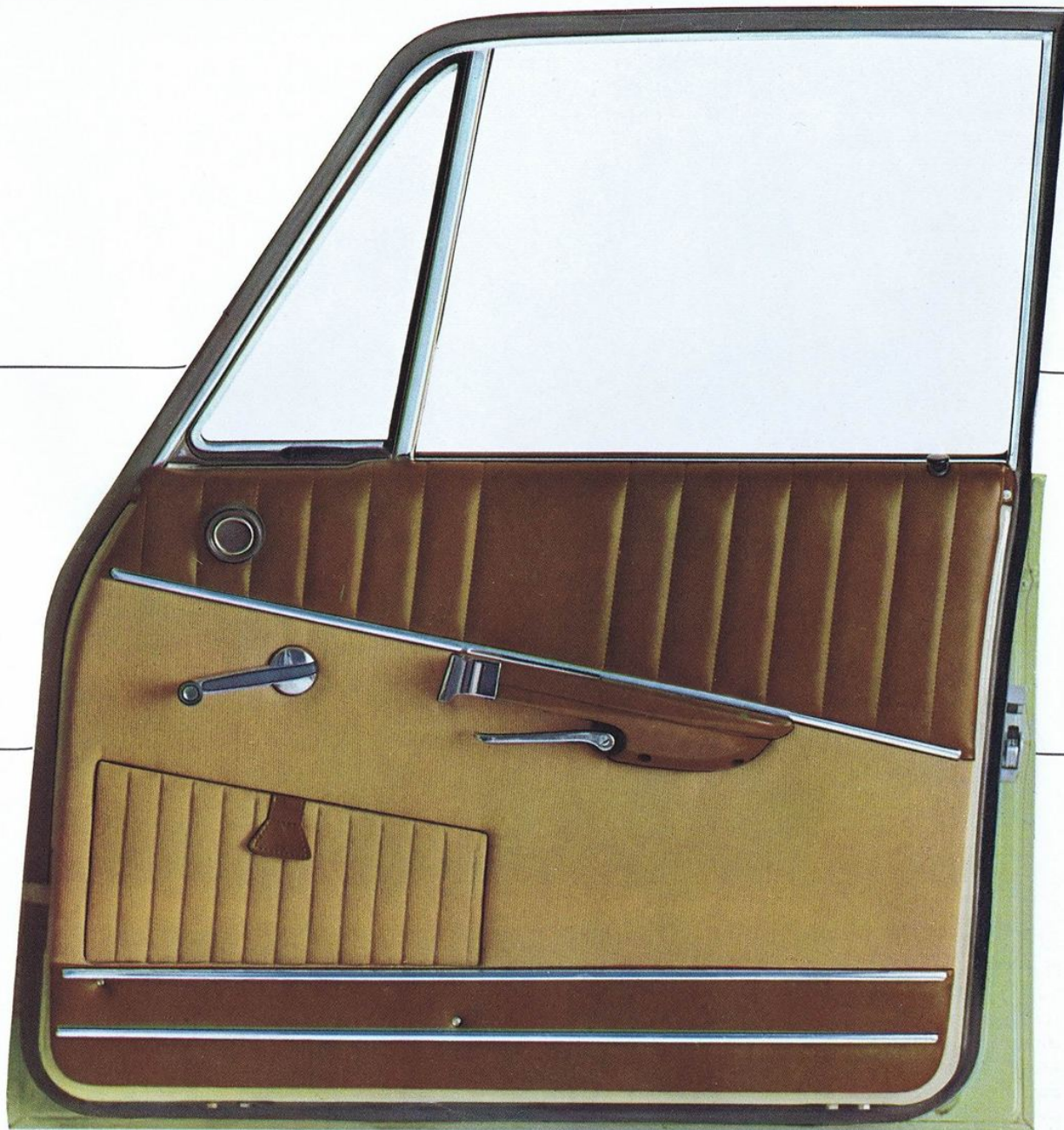


Centre gear lever. Short travel well-defined shift positions. Direct, silk-smooth gear change by synchromesh.

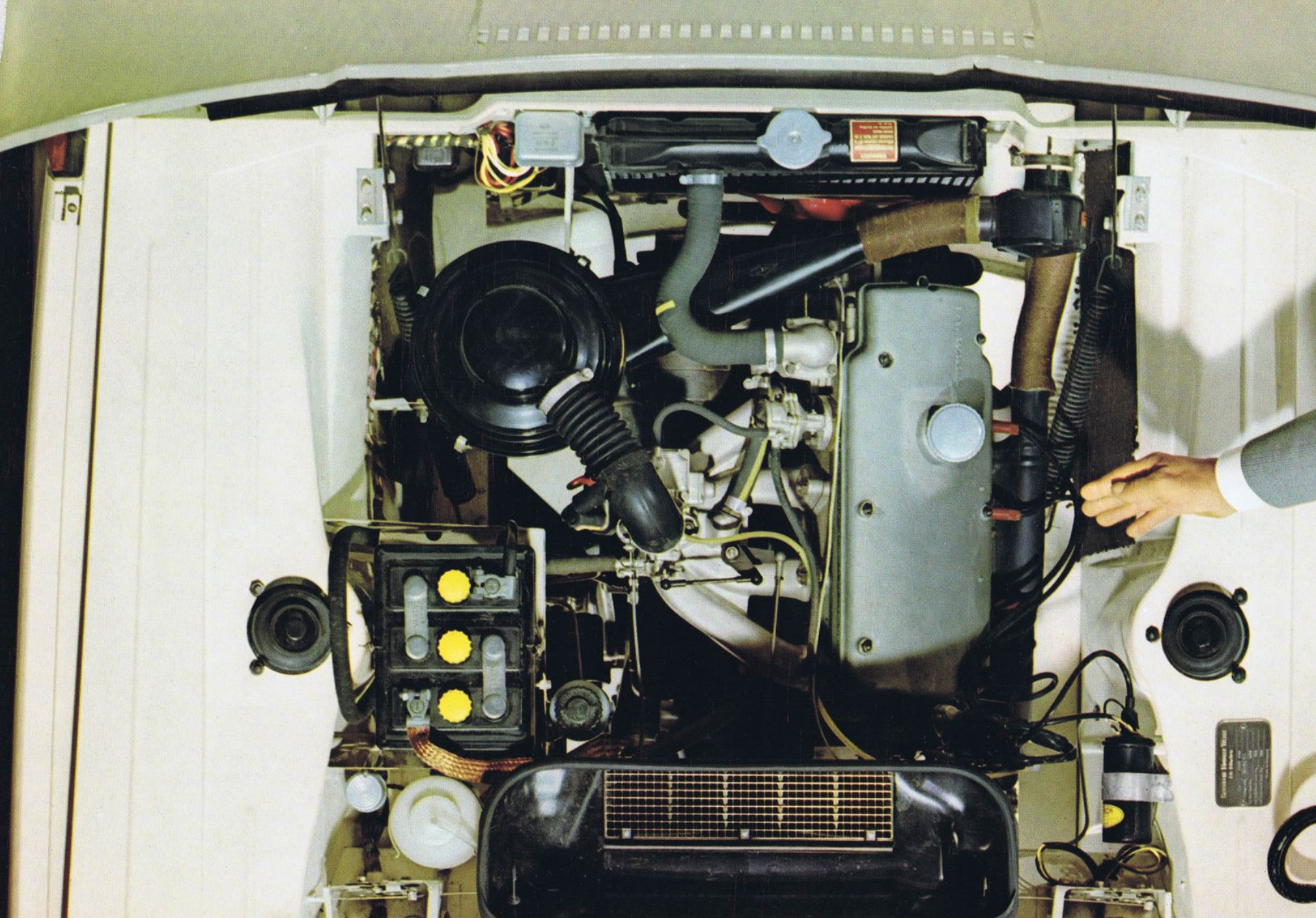




Four wide doors – making it easy to get in and out. Windows can be completely retracted. Burglar-proof quarter-lights with rotary knob and self-locking device. Safety door handles under the arm rests prevent accidental opening.

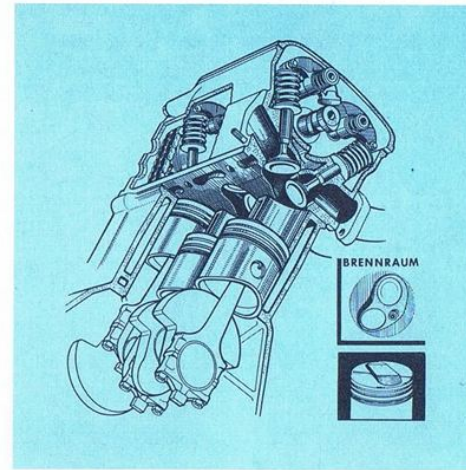




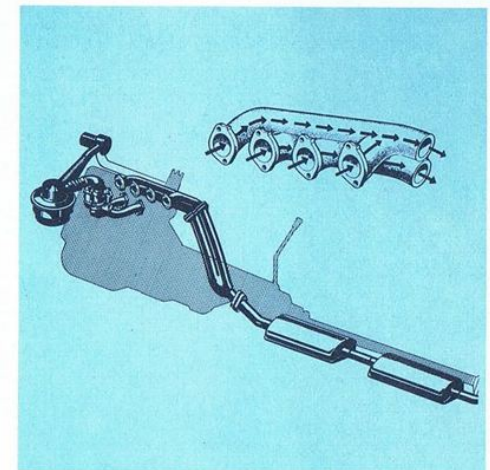


Continental Engine Water  
Pump  
Model  
Part No.  
Serial No.  
Date





Combustion space as turbulence pan. Pistons with crowns, to provide controlled turbulence of the gas-air mixture. Complete combustion – optimum fuel utilisation and maximum performance. Safe operation at high revolutions provided by overhead camshaft with inclined valves.



Dynamically matched intake and exhaust system. Internal and external exhaust manifold arranged in groups. Continued in a Y-piece which provides controlled discharge of exhaust gases.

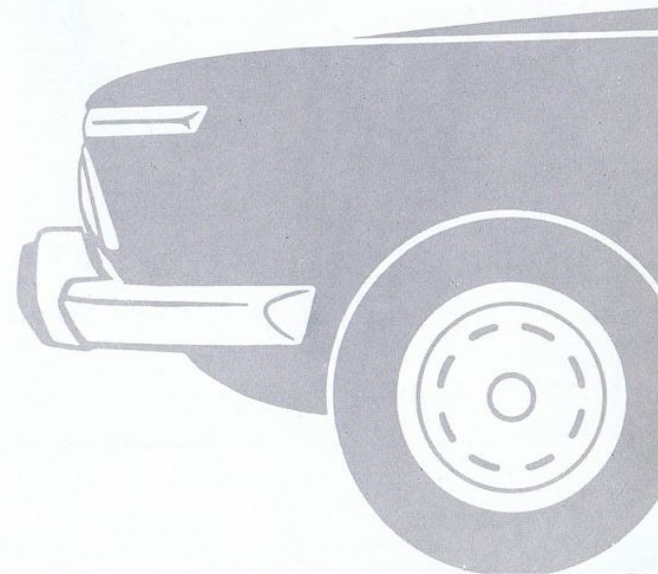
In conception and design, the engine of the BMW 1800 is so advanced that it will be ahead of its time years hence. It is brimful of new ideas.

The engine in short: four cylinder 4-stroke in-line engine, 90 metric h. p., with overhead camshaft and inclined valves in V-arrangement, mounted at an angle of  $30^\circ$ , improved oil circulation, better lubrication, anti-knock combustion chamber with turbulence pan, fully balanced, 5-bearing crankshaft in 4-layer journal bearings, thermostatically controlled cold starter, downdraught carburettor with acceleration pump and choke valve.

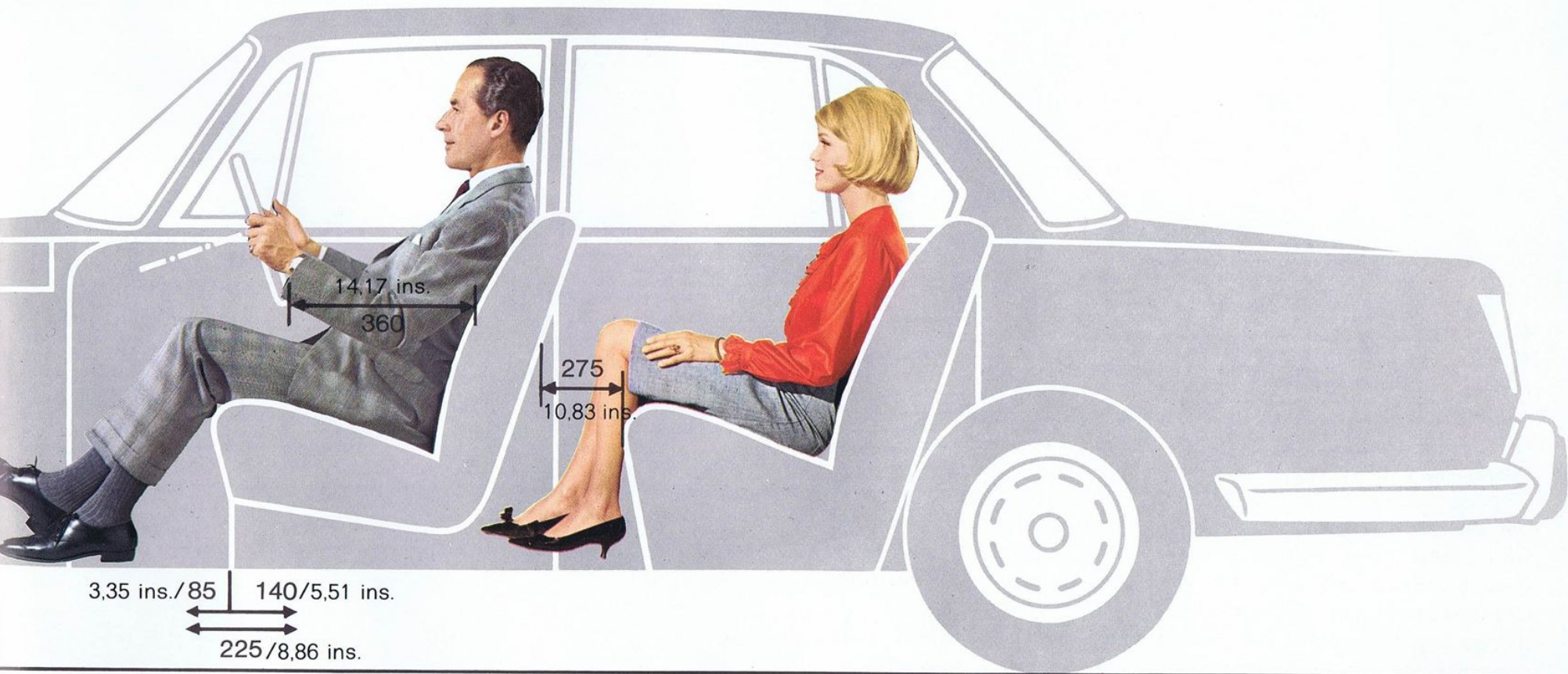


### **General equipment**

Speedometer with daily mileage indicator; combined instrument panel with indicators for cooling water, fuel, oil-pressure, main beam, direction, battery charge, choke; ignition switch with steering wheel lock and starting repeat lock, electric clock; infinitely variable instrument illumination; interior light with courtesy switch; cigar lighter; boot light; parking light; 2-speed screen wipers; automatic screen washer; continuous annular horn ring on safety steering wheel; 3 ashtrays; 2 padded sunvisors; one with vanity mirror; recessed grab handle for front-seat passenger; flexible handles with hooks for coats; Rear carpets; washable headlining; two-tone door lining; pockets in front doors; safety belt anchorage points; two pockets on the back of front seats; Reclining seats; decorative wheel discs; protective metal strips under doors; chromium exhaust pipe trim.









# Bayerische Motoren Werke AG München

## Specification

<b>Engine:</b>	Water-cooled BMW 4-cylinder 4-stroke in-line engine inclined 30°, with overhead camshaft and inclined valves in V-arrangement	<b>Hand brake:</b>	Hand-operated lever between the front seats, acting on rear wheels.	<b>Lighting:</b>	Asymmetrical dipping beam, rear light panel including flashing direction indicators, stop lamps, reversing lamp, tail and parking lamps.
<b>Cubic capacity:</b>	108 cu. ins. (1773ccm), stroke 3.15" (80mm), bore 3.31" (84mm)	<b>Body:</b>	Distortion-resistant all-steel body welded to floor unit, lightweight construction.	<b>Dimensions:</b>	
<b>Maximum output:</b>	90 DIN metric h.p. at 5250 r.p.m. 102 SAE h.p. at 5800 r.p.m.	<b>Doors:</b>	Four front-hung doors, opening to almost 90°. Entry width front, 37 1/2" (953 mm), rear, 34 1/8" (867 mm). Front doors can be locked individually rear doors lock from inside.	<b>Length:</b>	14 ft 9 1/8 ins (4500 mm)
<b>Maximum torque:</b>	101.8 Foot pounds (14.6 DIN mkg) at 3000 r.p.m.	<b>Front seats:</b>	Adjustable individual seats with fittings for conversion to horizontal position and pockets on the back of the seats; rounded over width of shoulders, fabrics wear-resistant, positive-breathing.	<b>Width:</b>	5 ft 7 3/8 ins (1710 mm)
<b>Compression ratio:</b>	8.6:1	<b>Seats rear:</b>	Bench-type seat with long thigh support. Seat width on upholstery: front 2x23" (2x585 mm), rear, 4'5 3/4" (1366 mm).	<b>Height:</b>	4 ft 9 1/8 ins (1450 mm) unladen 4'7 1/8" (1400 mm) laden
<b>Ignition:</b>	with centrifugal and vacuum control.	<b>Elbow width:</b>	Front 4'6" (1375 mm), rear 4'6" (1375 mm).	<b>Wheel base:</b>	8 ft 4 3/8 ins (2550 mm)
<b>Carburetter:</b>	Solex downdraught carburetter with acceleration pump and choke valve.	<b>Shoulder width:</b>	Front 4'4 3/4" (1340 mm), rear 4'4 3/8" (1330 mm).	<b>Track front:</b>	4 ft 4 ins (1320 mm)
<b>Transmission:</b>		<b>Luggage boot:</b>	Spring-assisted lid, 21.2 cubft (600 l) capacity, high storage capacity, level floor, spare wheel covered under floor in boot.	<b>rear:</b>	4 ft 6 ins (1366 mm)
<b>Clutch:</b>	Hydraulically actuated single dry plate clutch with torsional-vibration damper.	<b>Engine compartment:</b>	Front-hung bonnet, with safety catch.	<b>Turning circle diameter:</b>	approx. 31 ft 6 ins (9.60 m)
<b>Gearbox:</b>	4-speed, synchromesh centre position gear lever	<b>Heater:</b>	Rapid-action fresh air high-capacity heater with instantly responding and finely adjustable temperature control by cold and warm air mixing; natural atmospheric humidity maintained, healthy air-conditioning; passage of air according to choice to defroster nozzles or vehicle interior; electric fan with two speeds.	<b>Ground clearance:</b>	approx. 57/8 ins (150 mm)
<b>Gear ratio:</b>	1st gear: 3.816; 2nd gear: 2.07; 3rd gear: 1.33; 4th gear: 1.0; reverse: 4.153.	<b>Windows:</b>	Four fully retractable winding windows; hinged quarter-lights in front doors with rotary knob and self-locking device.	<b>Weight, dry:</b>	2238 lbs (1015 kg)
<b>Rear axle transmission:</b>	4.22; hypoid gear; casing flexibly mounted.	<b>Fuel tank capacity:</b>	about 11 gallons (53 l)	<b>Unladen weight:</b>	2359 lbs (1070 kg)
<b>Rear wheel drive:</b>	two double-jointed shafts.	<b>Electrical equipment:</b>		<b>Load:</b>	882 lbs (400 kg)
<b>Wheels, steering, tyres, brakes:</b>		<b>Battery:</b>	6-volt, 77 Ah with large cold start capacity.	<b>Permissible total weight:</b>	3241 lbs (1470 kg)
<b>Wheel suspension, front:</b>	Spring leg axle with transverse guiding link, rubber mounted, spring deflection 6 1/16" (170 mm).	<b>Dynamo:</b>	200/300 W	<b>Permissible trailer load:</b>	2646 lbs (1200 kg) (brake load)
<b>rear:</b>	Independently sprung wheels, tracked by inclined trailing arms; coil springs with auxiliary rubber-air spring; spring deflection 7 7/16" (190 mm); double-action telescopic shock absorbers with long working stroke.			<b>Maximum speed:</b>	100 mph (160 km/h)
<b>Steering:</b>	ZF-Gemmer steering with helical gear and roller, 3-part track rod; steering ratio 17.58.			<b>Acceleration:</b>	from 0 to 62 mph (100 km/h) in 13.2 sec.
<b>Tyres:</b>	6.00-14 sport, tubeless, low cross-section with safety shoulder.			<b>Normal consumption:</b>	25.7 m.p.g. (11 l/100 km) at 68.3 mph (110 km/h) (DIN 70030)
<b>Footbrake:</b>	With Mastervac Servo assistance				minor service every 3750 miles (6000 km)
<b>Front:</b>	Self-adjusting disc brake, disc diameter 10 1/2" (268 mm)				major service every 7500 miles (12000 km)
<b>Rear:</b>	Drum-type, Simplex, 9 7/8" (250 mm) diameter with leading and trailing shoes.				

BMW reserve the right to alter details of design, equipment and accessories described and illustrated in this publication at any time without notice, if they consider this to be necessary in the interests of further development or for reasons of manufacture or selling. Data on dimensions, weights, and performance are subject to the appropriate tolerances.

Your local dealer

41900.000